



C - PS



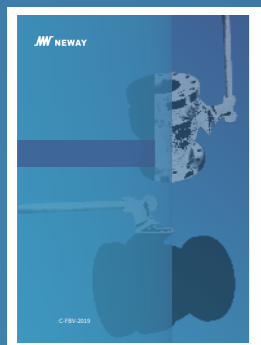
C - GGC



C - FSV



C - TMBV



C - FBV



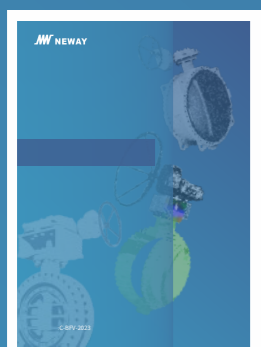
C - CBV



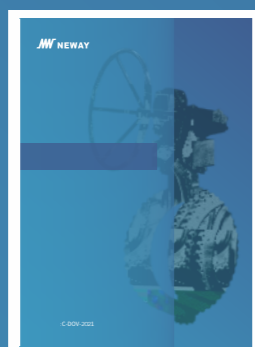
C - MMBV



C - FWBV



C - BFV



C - DOV

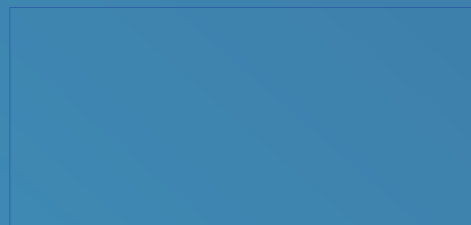


C - TOV



C - CPS

: C-PGV-2025





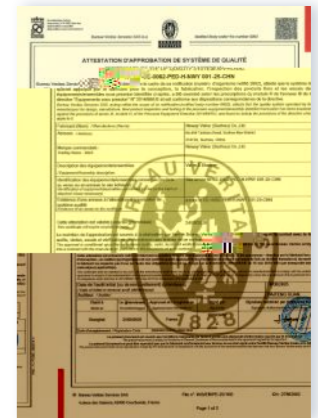
603699)



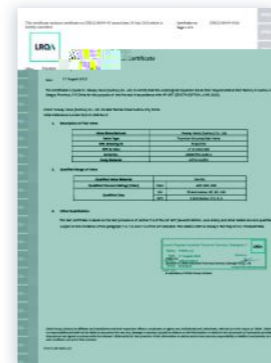
NORSOK



ISO 9001



CE/PED



TA Luft



ABS



AD2000

230,000

1 1 3 1 1  
Ansys Fe-safe CF-design Siemens PLM NX

SAP

80

ISO API

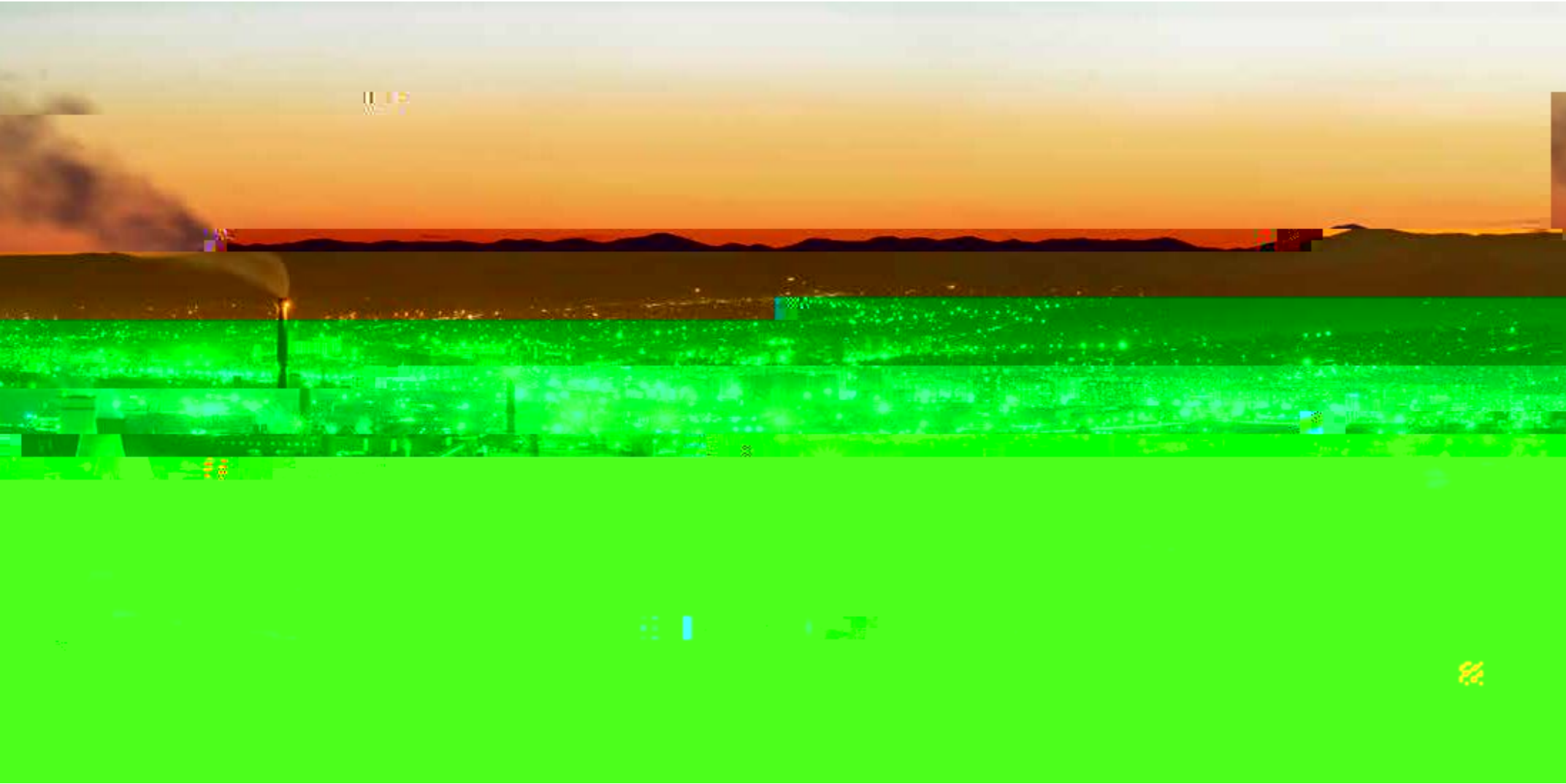
ISO 9001 , API 6A, API 6D, API 600

CE-PED AD2000 TA-Luft,

API 624, ISO 15848

API 607, API 6FA

- 1
- 2-9
- 10-17
- 18
- 19
- 20



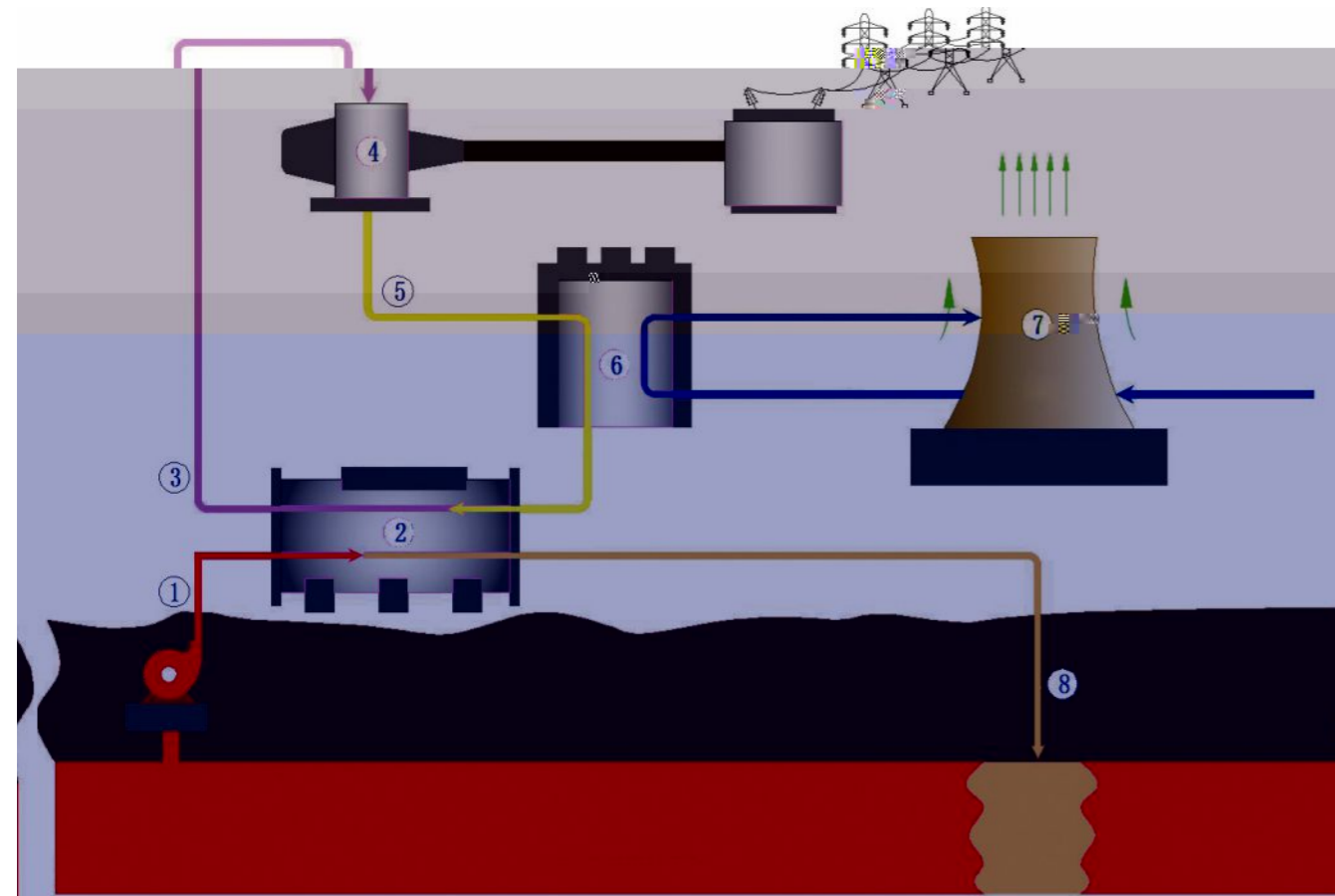
60%。

/ /

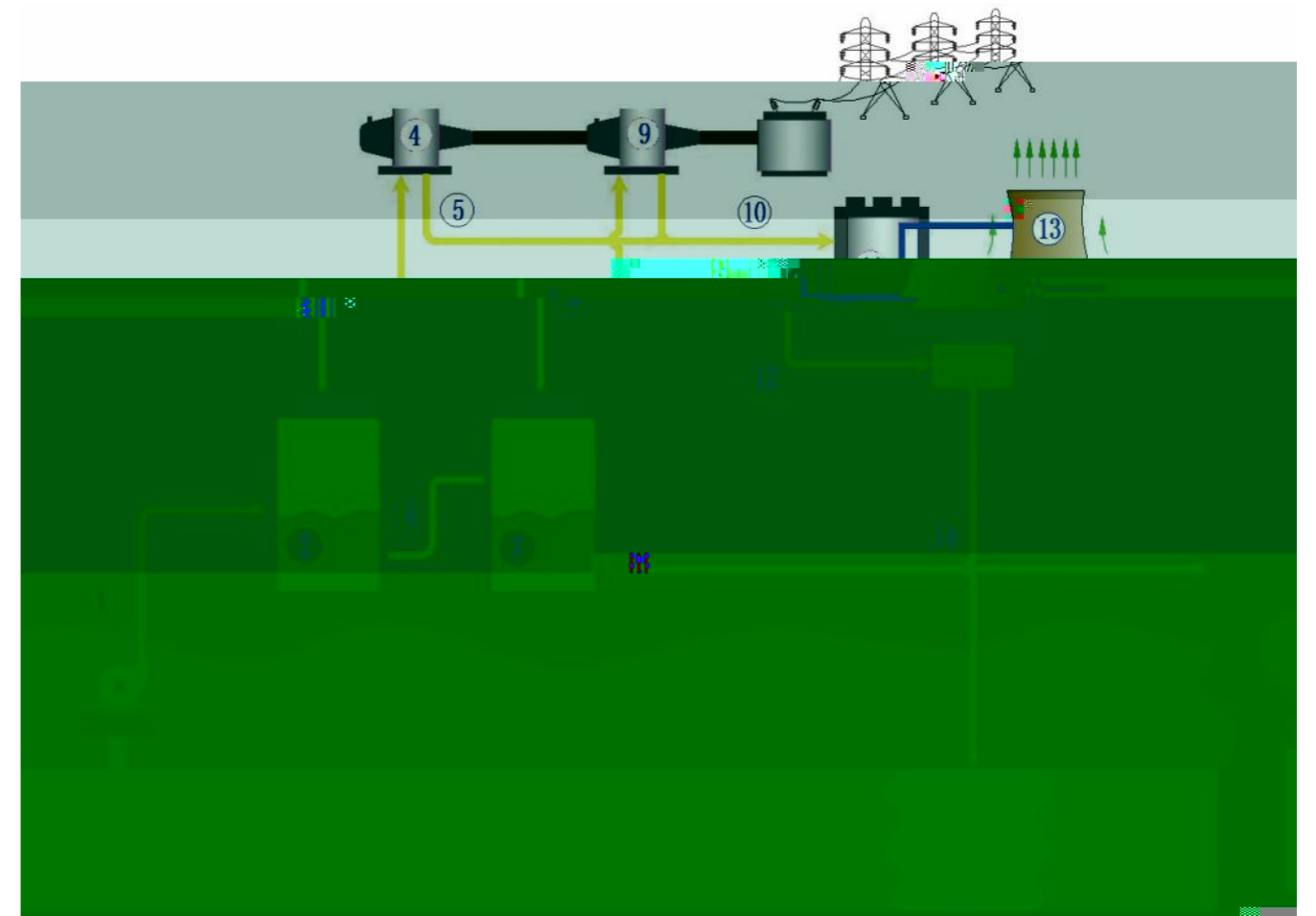




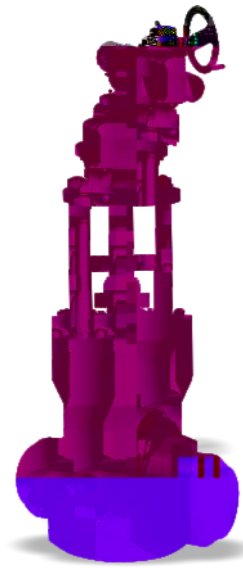




- |    |    |    |    |
|----|----|----|----|
| 1. | 3. | 5. | 7. |
| •  | •  | •  | •  |
| •  | •  | •  | •  |
| •  | •  | •  | •  |
| 2. | 4. | 6. | 8. |
| •  | •  | •  | •  |
| •  | •  | •  | •  |
| •  | •  | •  | •  |



- |    |      |    |     |     |
|----|------|----|-----|-----|
| 1. | 4.高压 | 7. | 10. | 13. |
| •  | •    | •  | •   | •   |
| •  | •    | •  | •   | •   |
| •  | •    | •  | •   | •   |
| 2. | 5.   | 8. | 11. | 14. |
| •  | •    | •  | •   | •   |
| •  | •    | •  | •   | •   |
| •  | •    | •  | •   | •   |
| 3. | 6.   | 9. | 12. |     |
| •  | •    | •  | •   |     |
| •  | •    | •  | •   |     |
| •  | •    | •  | •   |     |



2"~30"(DN50~DN750)

CLASS900~CLASS 4500(PN150~PN760)

WCB/WC6/WC9/C12A/CF3M/CF8M/A105/F11/F22/F36/F91/  
F92/F304/F304L/F304H/F316/F316L/F316H/F321/F347

- 
- 
- 
- 
- 

2"~28"(DN50~DN700)

CLASS 300~CLASS 4500(PN50~PN760)

WCB/WC6/WC9/C12A/CF3M/CF8M/A105/F11/F22/F36/F91/  
F92/F304/F304L/F304H/F316/F316L/F316H/F321/F347

- Class 300~600:
- Class 900~4500:
- 
- 
- 
- 
- 



2"~24"(DN50~DN600)

CLASS 300~CLASS 4500(PN50~PN760)

WCB/WC6/WC9/C12A/CF3M/CF8M/A105/F11/F22/F36/F91/  
F92/F304/F304L/F304H/F316/F316L/F316H/F321/F347

- 
- 
- 
- 
- 
- 
- 

API6D

1/2"~2-1/2"(DN15~DN65)

CLASS 1500~CLASS 4500(PN250~PN760)

A105/F11/F22/F36/F91/F92/F304/F304L/F304H/F316/  
F316L/F316H/F321/F347

- 
- 
- 
- 
- 
- 
- 

CLASS>1700lb



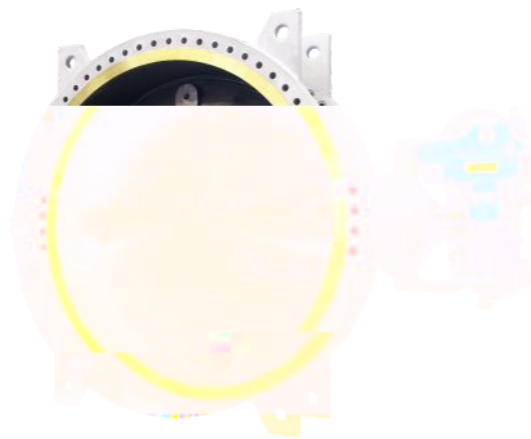


1/2"~24"(DN15~DN600)  
 CLASS900~CLASS 4500(PN20~PN760)  
 WCB/WC6/WC9/C12A/CF3M/CF8M/A105/F11/F22/F36/F91/  
 F92/F304/F304L/F304H/F316/F316L/F316H/F321/F347

- 
- 
- 
- 
- 
- 

WCB / WC6 / WC9 / C12A / CF3M / CF8M

3"~60"(DN80~DN1500)  
 CLASS 150~CLASS 600(PN20~PN110)  
 WCB/WC6/WC9/C12A/CF3M/CF8M

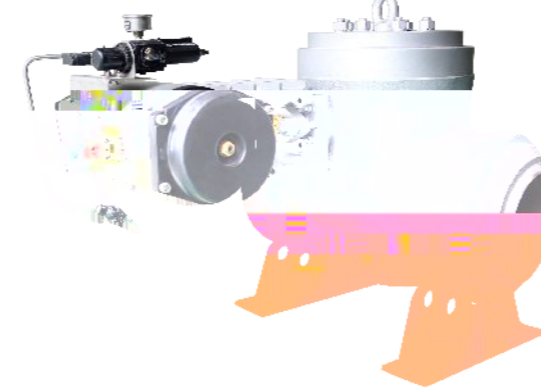


- 
- 
- 
- 
- 
- 

ISO 15848

API 607

3

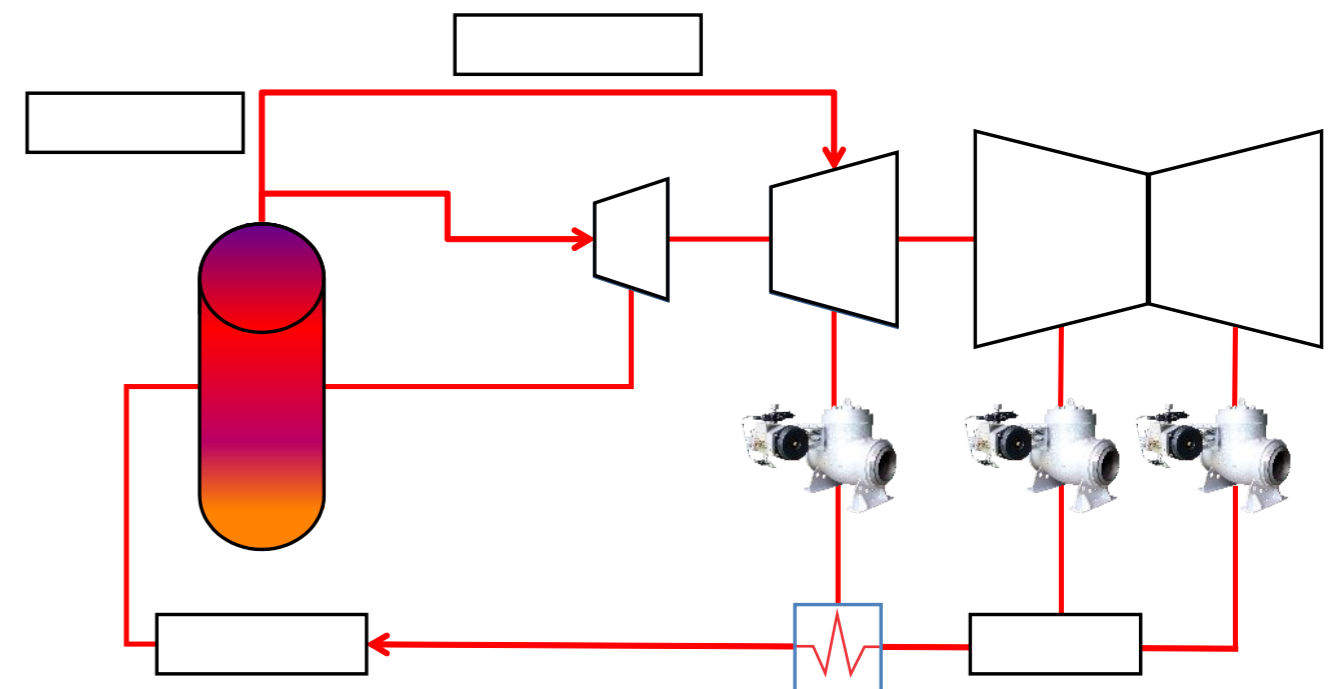


6"~42"(DN150~DN1050)  
 CLASS 150~CLASS 2500(PN20~PN420)  
 WCB/WC6/WC9/C12A/CF3M/CF8M/A105/F11/F22/F36/F91/  
 F92/F304/F304L/F304H/F316/F316L/F316H/F321/F347

- 
- 
- 
- 
- 
- 

1s),

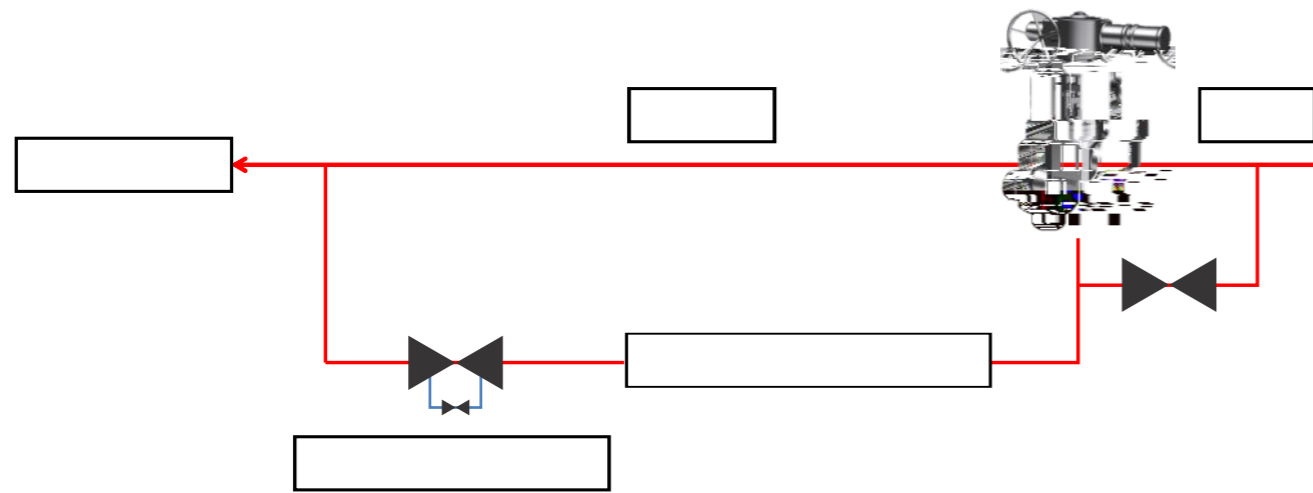
<80°C。





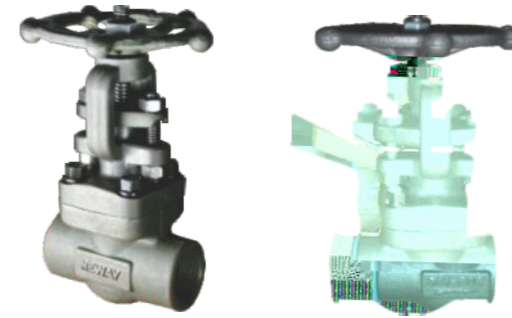
2"~24" (DN50~DN600)  
 CLASS 900~CLASS 3500 (PN150~PN600)  
 WCB/WC6/WC9/C12A/CF3M/CF8M/A105/F11/F22/F36/F91/  
 F92/F304/F304L/F304H/F316/F316L/F316H/F321/F347

- 
- 
- 
- 
- 



- 
- 

+ +



1/2"~2" (DN15~DN50)  
 CLASS 150~CLASS 1500 (PN20~PN250)  
 A105/F11/F22/F36/F91/F92/F304/F304L/F304H/F316/  
 F316L/F316H/F321/F347

- 
- 
- 
- 
- 
- 
- 
- 

4"~8" (DN100~DN200)  
 CLASS 150~CLASS 900 (PN20~PN150)  
 WCB/WC6/WC9/C12A/CF3M/CF8M/A105/F11/F22/F36/F91/  
 F92/F304/F304L/F304H/F316/F316L/F316H/F321/F347

- 
- 
- 
- 
- 
- 
- 
- 





3/4"~4"(DN20~DN100)  
 CLASS 600~CLASS 2500(PN110~PN420)  
 WCB/WC6/WC9/C12A/CF3M/CF8M/A105/F11/F22/F36/F91/  
 F92/F304/F304L/F304H/F316/F316L/F316H/F321/F347

3/4"~16"(DN20~DN400)  
 CLASS 150~CLASS 2500(PN20~PN420)  
 WCB/WC6/WC9/C12A/CF3M/CF8M/A105/F11/F22/F36/F91/  
 F92/F304/F304L/F304H/F316/F316L/F316H/F321/F347



s



2"~8"(DN50~DN200)  
 CLASS 900~CLASS 2500(PN150~PN420)  
 WCB/WC6/WC9/C12A/CF3M/CF8M/A105/F11/F22/F36/F91/  
 F92/F304/F304L/F304H/F316/F316L/F316H/F321/F347

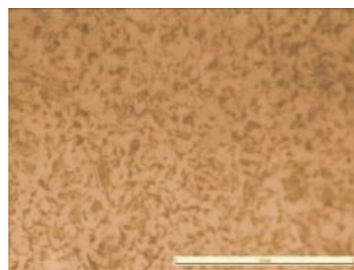
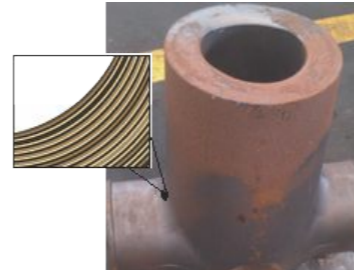
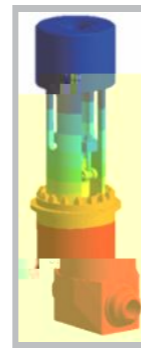
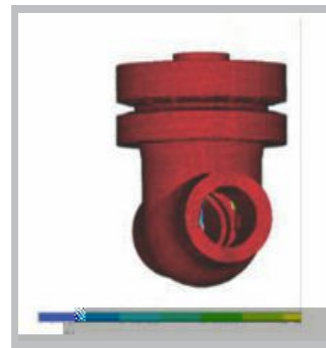
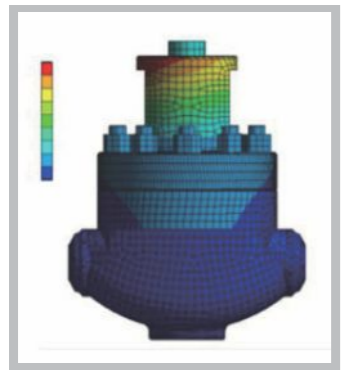
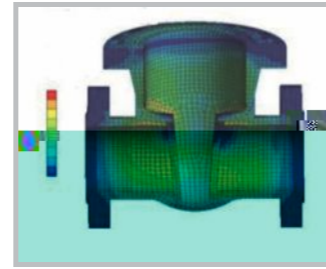
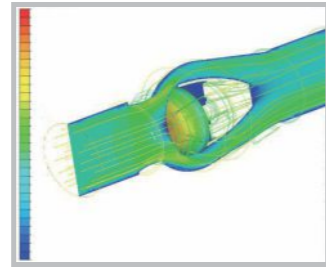
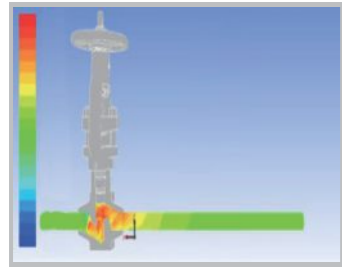
1-1/2"~6"(DN45~DN150)  
 CLASS 300~CLASS 2500(PN50~PN420)  
 WCB/WC6/WC9/C12A/CF3M/CF8M/A105/F11/F22/F36/F91/  
 F92/F304/F304L/F304H/F316/F316L/F316H/F321/F347



WCB/A105	-29	-425
F36	-29	-480
WC6/F11	-29	-540
WC9/F22	-29	-570
C12A/F91	-29	-600
F92	-29	-620
F304L/F316L	-29	-425
CF3M/CF8M/F304/F316/F321/F347	-29	-538
F304H/F316H	-29	-650

Cv

Cv

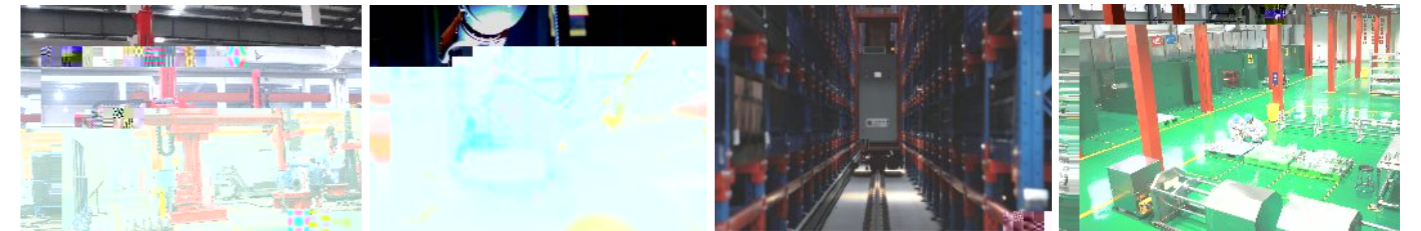


PMI、

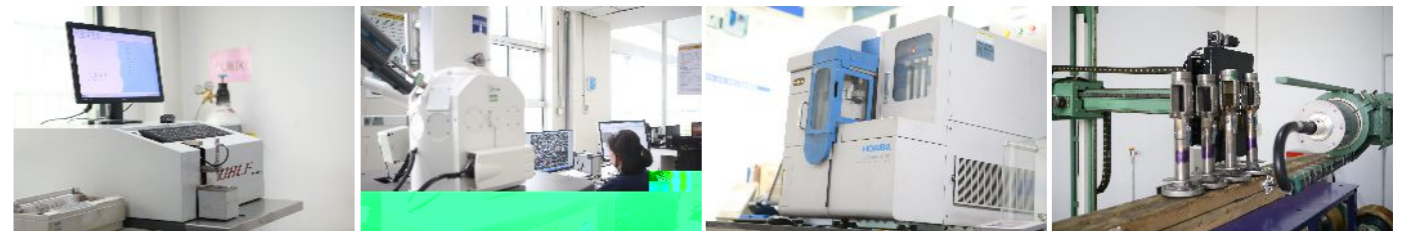
RT)、

MT)、

UT)、



3D



NHO分析

DR



-196

RT



成立于2014年

2,295



230,000  
140,061

2006  
2013



2008  
2015

112,500  
98,000



2008

40,000  
20,000



2017

3,000 / /  
30,000



2020

30,000  
19,000 ( )  
7,000 ( )



18

12

( )